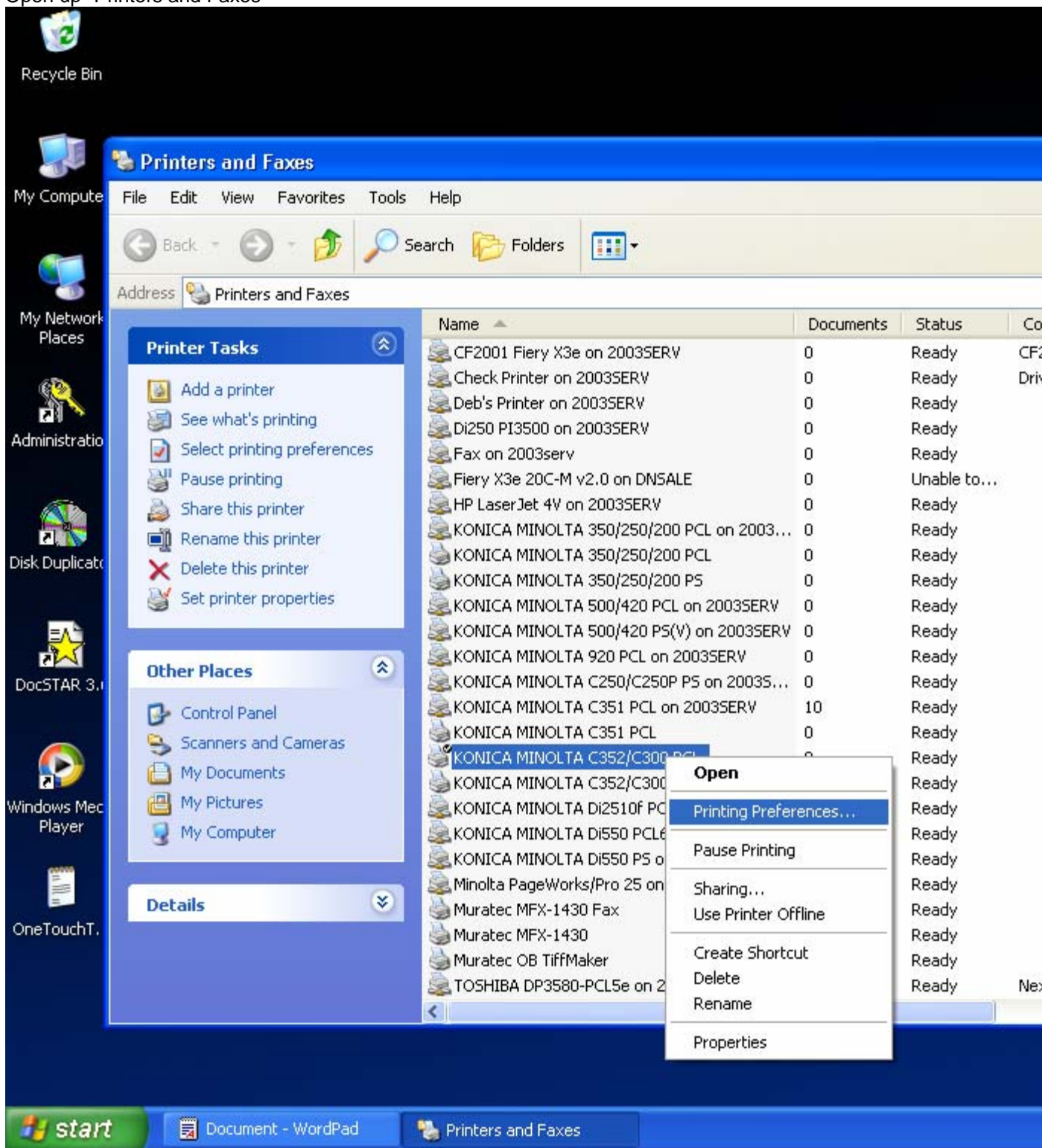
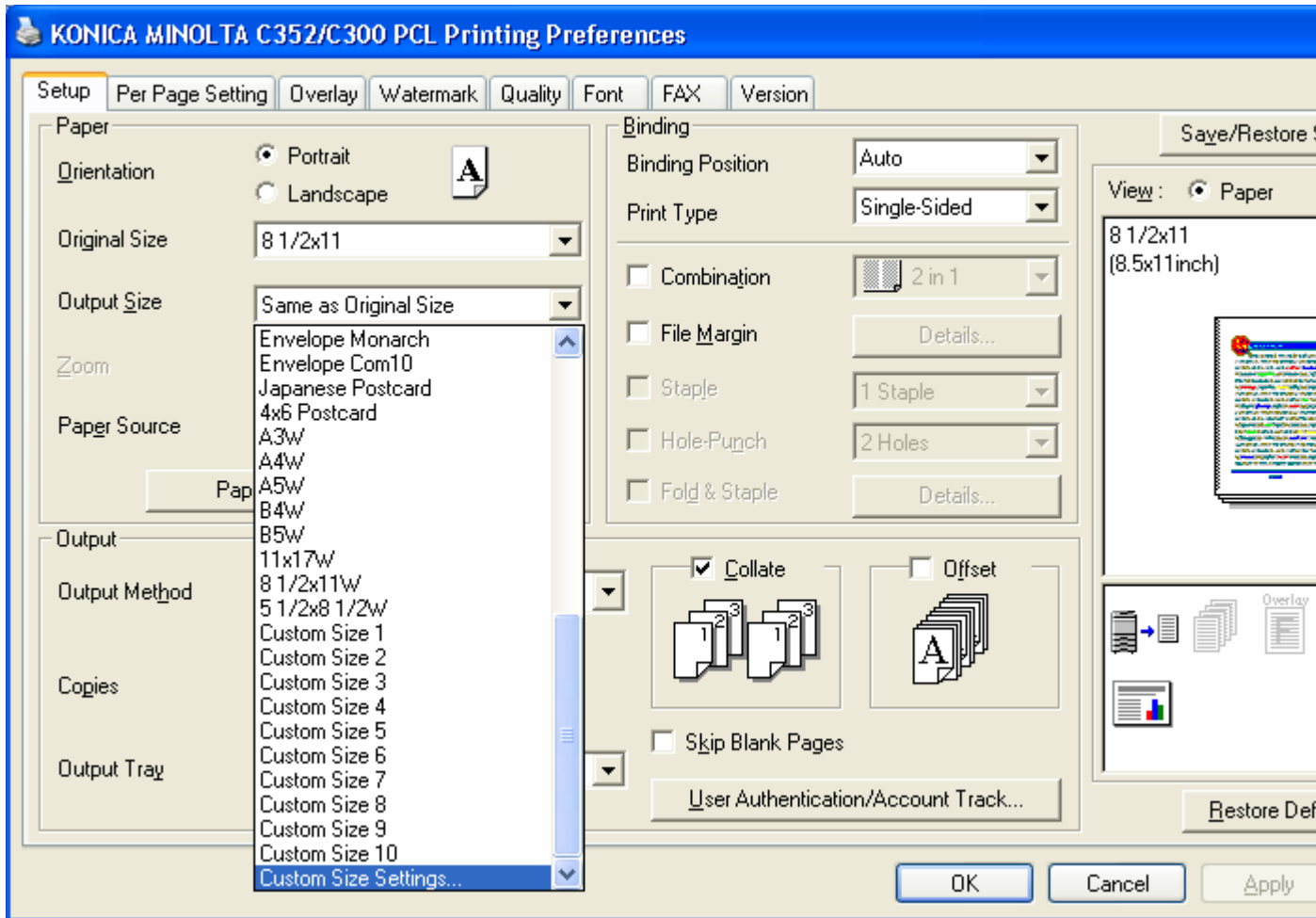


### Banner Printing using PCL Driver

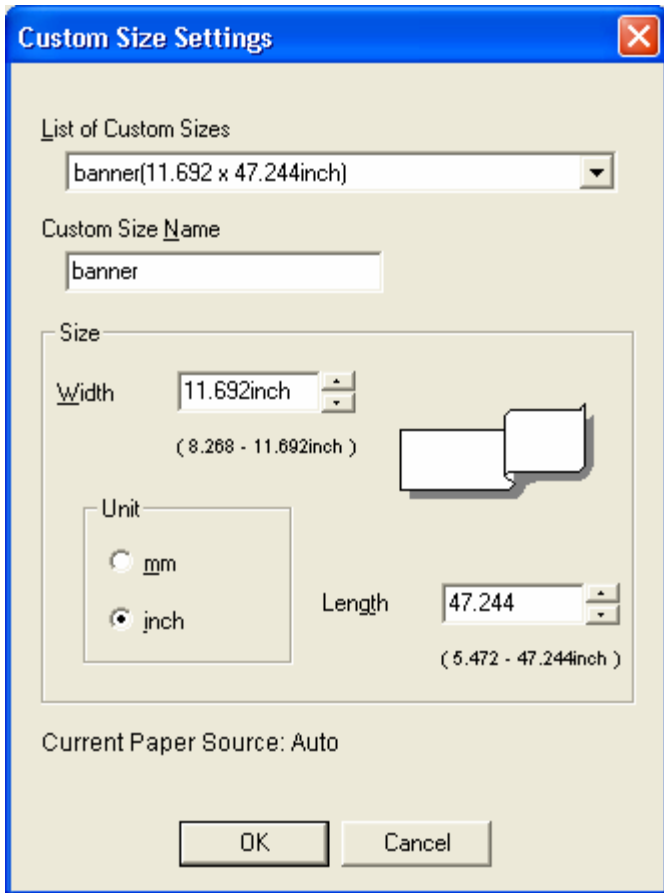
Open up "Printers and Faxes"



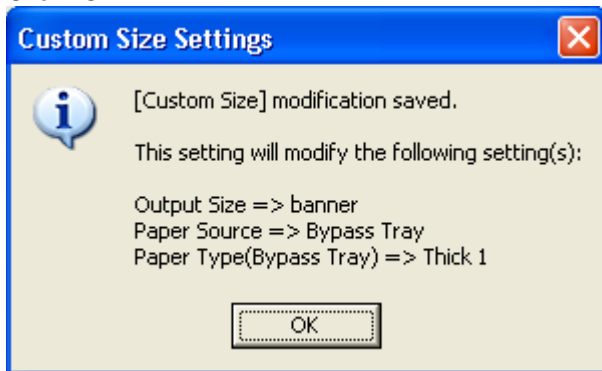
Right Click onto the Konica Minolta Color Printer and then left click onto "Printing Preferences" Under "Output Size" Go down to "Custom Size Settings"



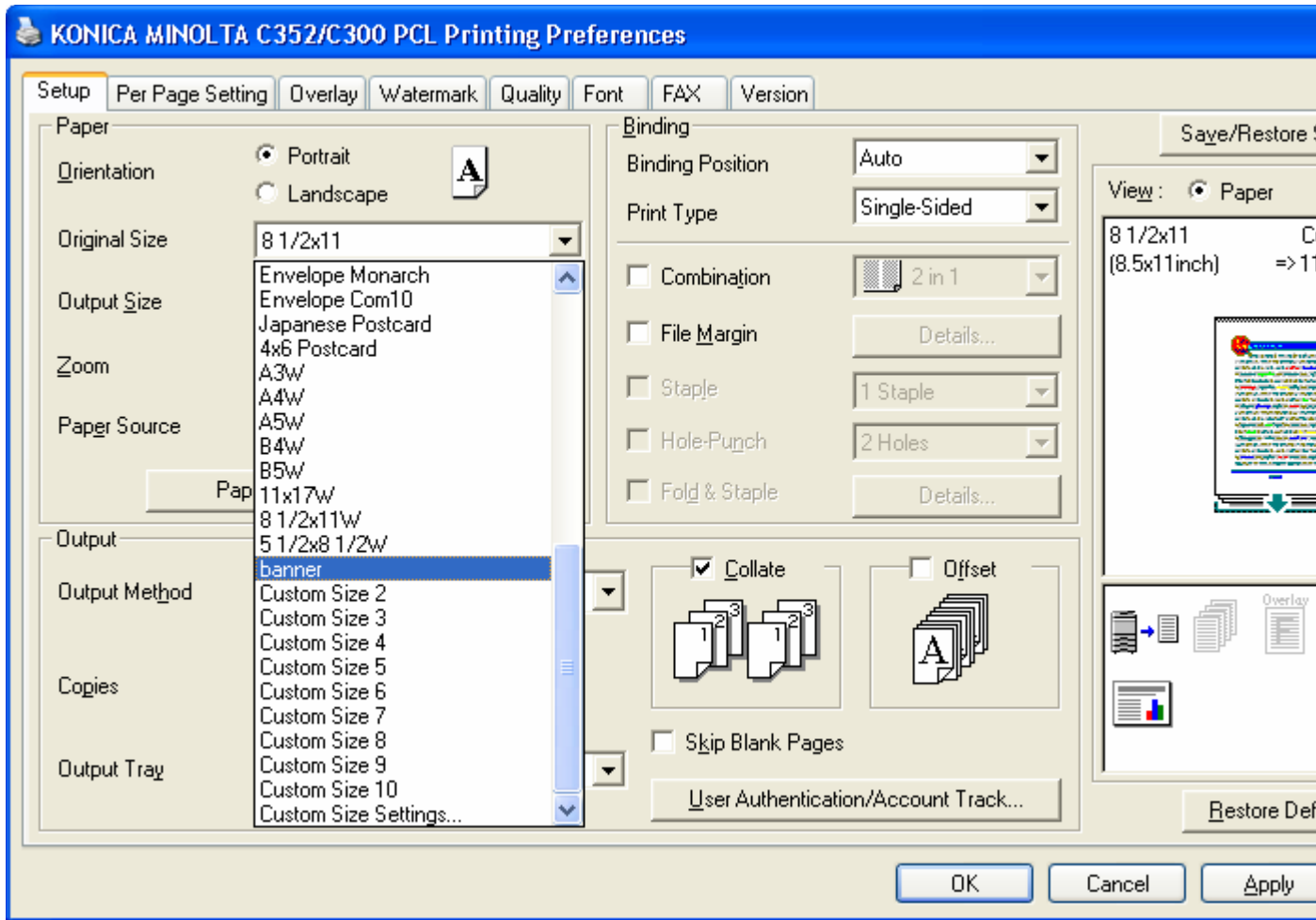
In "Custom Size Name" type "banner"  
In "Units" choose "inch"  
In "Width" type "11.692"  
In "Length" type "47.244"  
Click "OK"



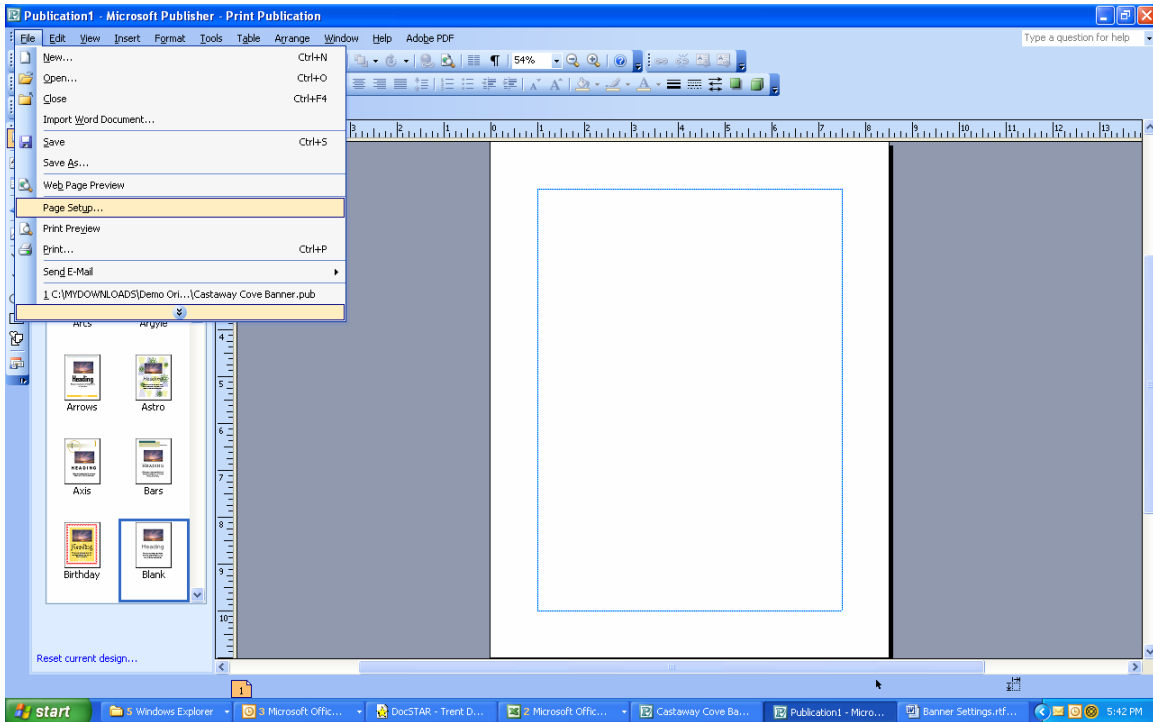
Click "OK"



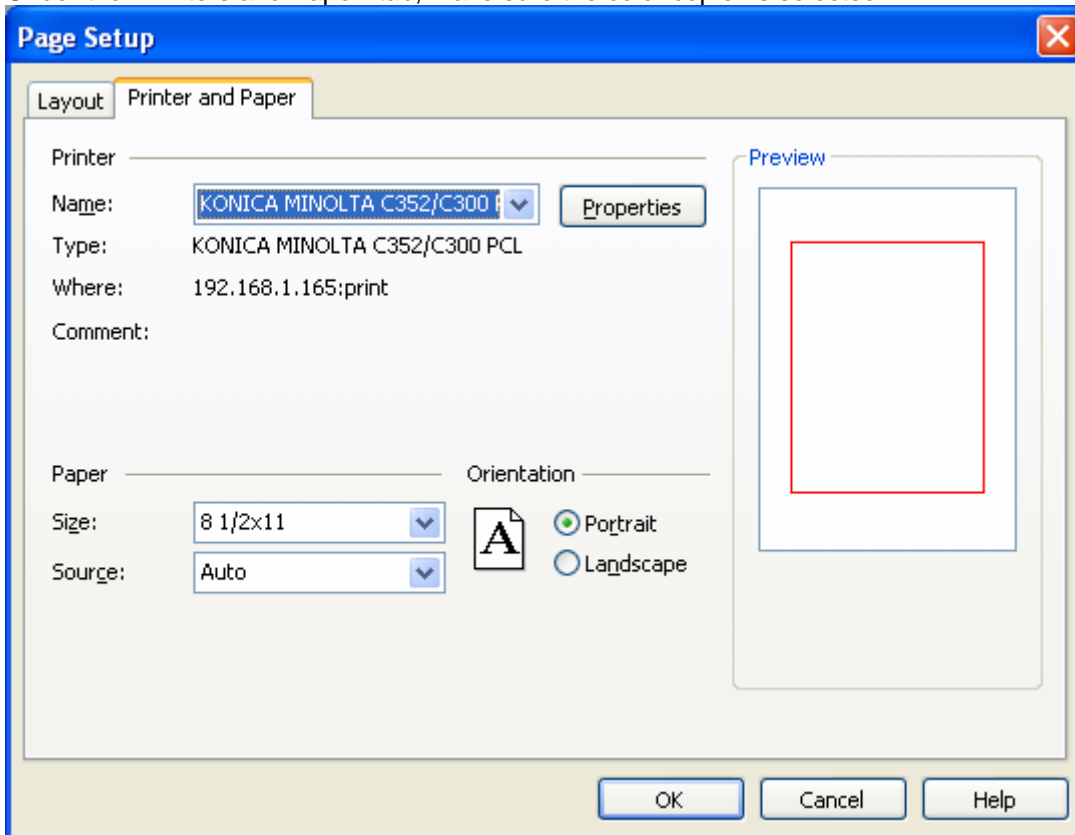
In "Original Size" choose "banner"



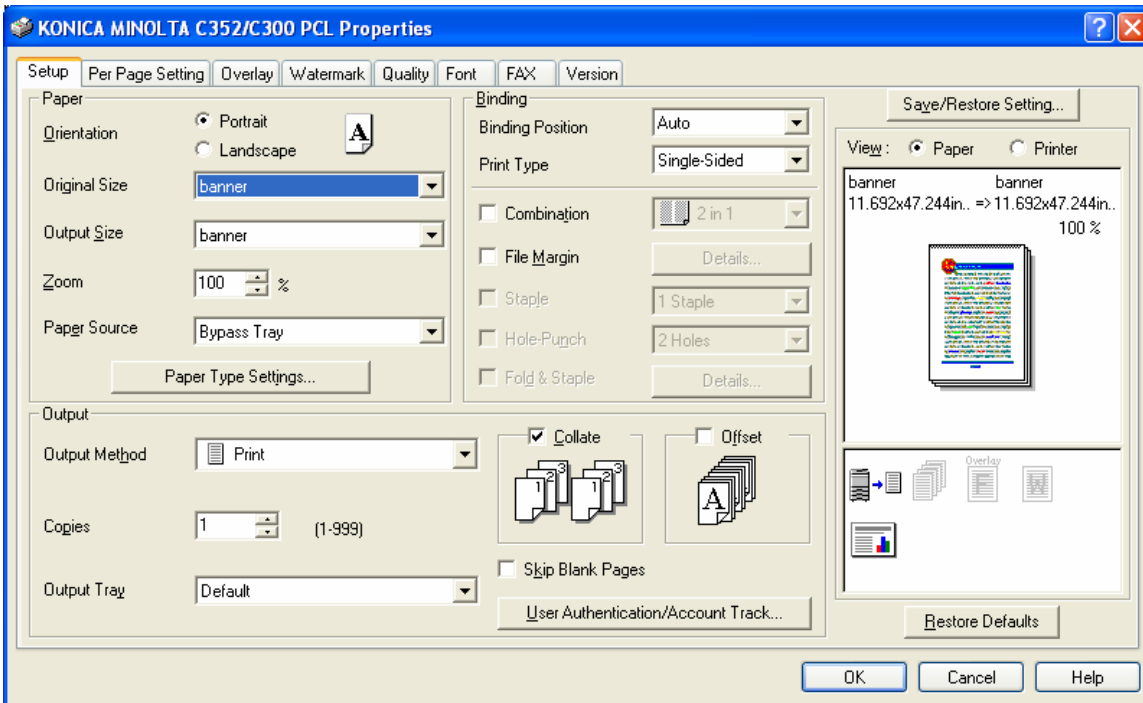
Open up Microsoft Publisher  
Go to File>Page Setup



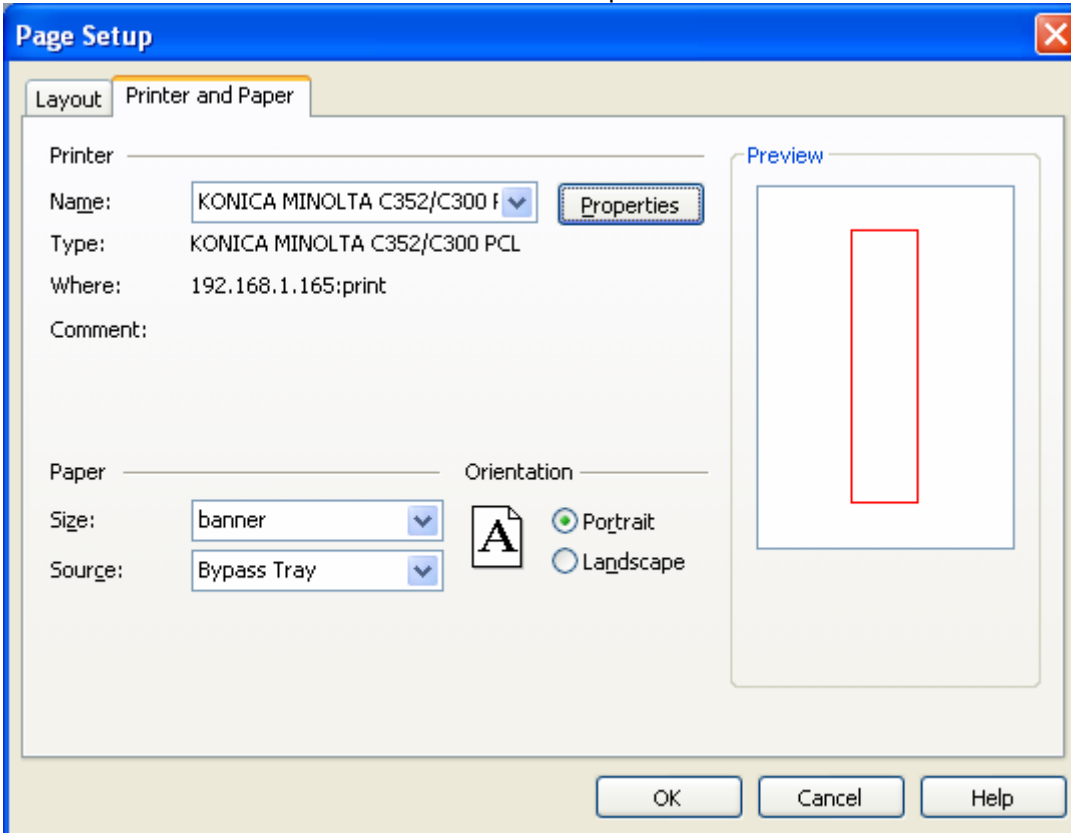
Under the "Printers and Paper" tab, make sure the color copier is selected

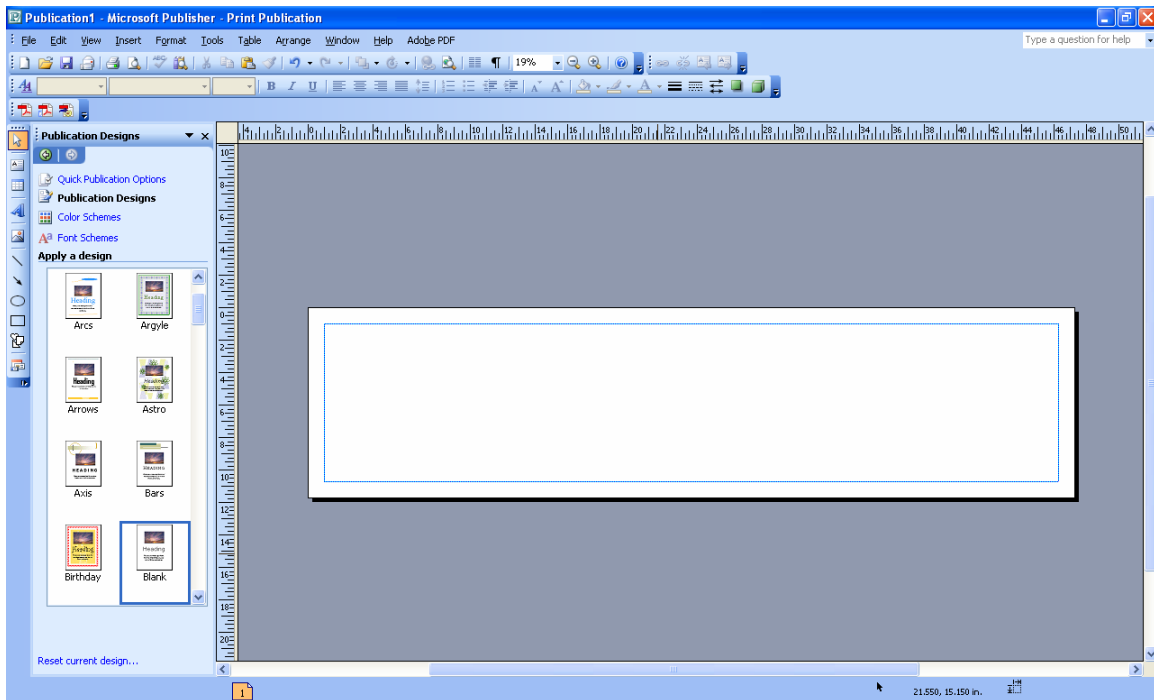


Then click the "Properties" button  
Select "banner" in both the "Original Size" and the "Output Size"  
And then click "OK"

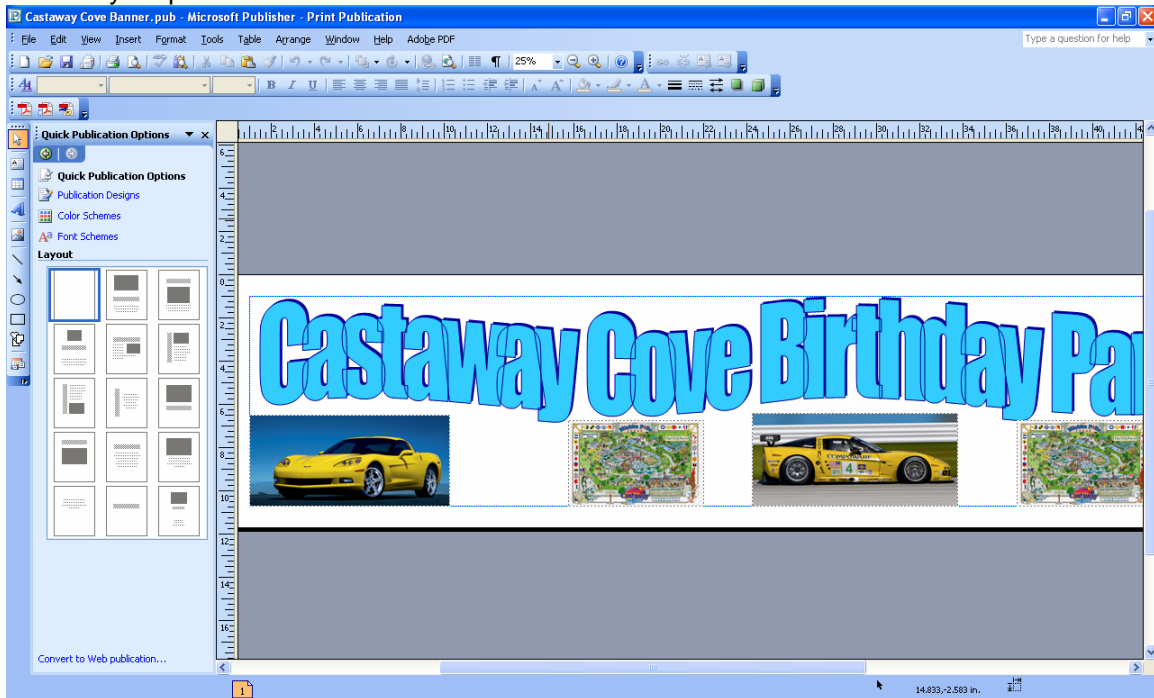


In "Orientation" choose either "Portrait" or "Landscape" as desired and then click "OK"





## Created your publication



BEFORE YOU PRINT THE DOCUMENT, GO TO THE COPIER AND PRESS THE

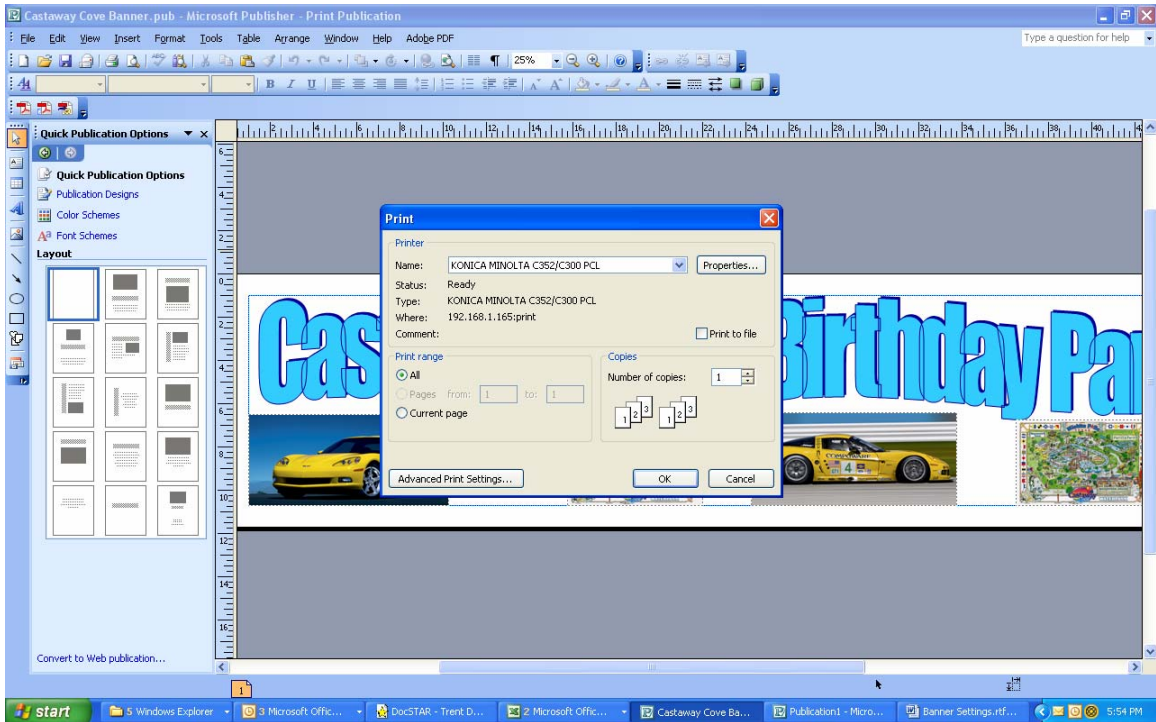
"Utility/Counter" button on the copier control panel.

Then choose "Banner Printing" >"On">"OK"

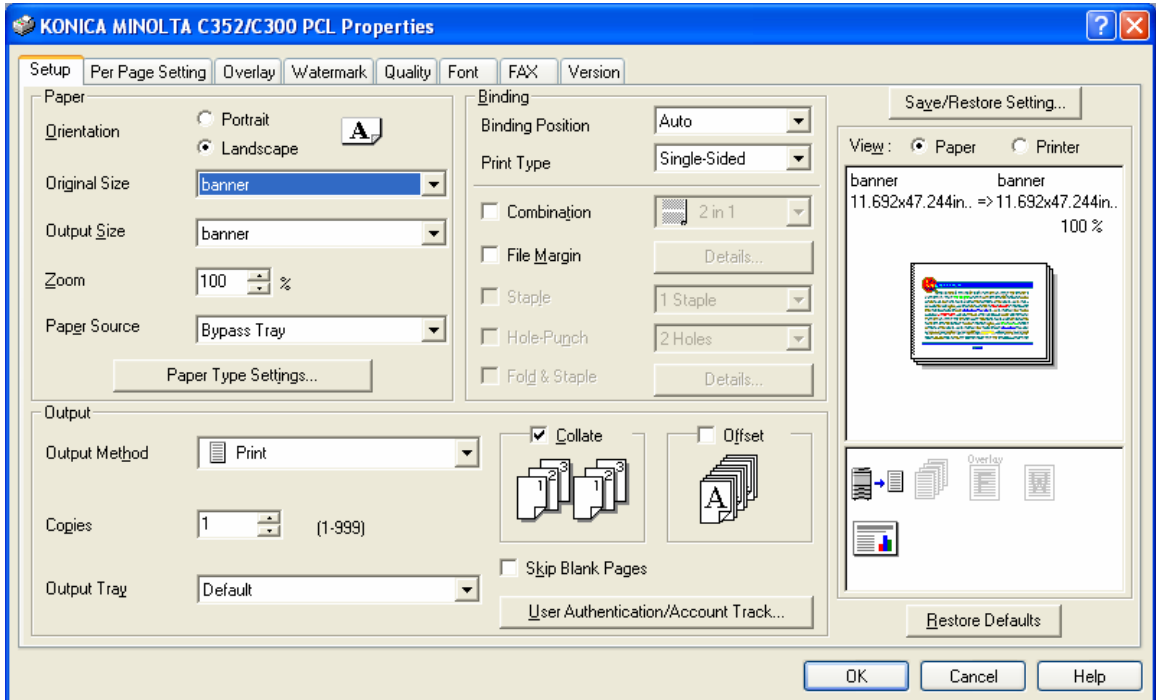
At the computer:

Go to File>Print>make sure the correct color copier is selected

Then Click "Properties"



Then click the “Properties” button  
Select “banner” in both the “Original Size” and the “Output Size”  
And then click “OK”



Click “OK”  
After a short while, at the copier display screen it will indicate that banner paper should be inserted into the bypass – put the banner paper in the bypass and press continue. Carefully make sure the paper goes through the copies smoothly.