

## How to upload a Custom Background Screen

Note: Valid images type(s):.gif, .jpeg, .png.

For optimal results, the image should be 800 pixels wide by 405 pixels high.

Maximum file size:128 KB

You need to have the image all ready on your computer somewhere that you can Browse to.

You can down load to pre-designed background screens from our web site,  
[http://hightechofficesystems.com/Support\\_Links.html](http://hightechofficesystems.com/Support_Links.html)

Via web Browser, enter MFP's IP address

On the “Links & Index” tab, click onto “Custom Background Image”

Ready  
Tray 1 Empty  
Refresh

**Lexmark X654de**  
Address: 192.168.1.121  
Contact Name:  
Location:

**Links & Index**

**Links**

- Utilities and Drivers
- Order Supplies
- High Tech Office Systems Web Site
- High Tech Remote Support
- Technical Support
- Firmware Updates

**Index**

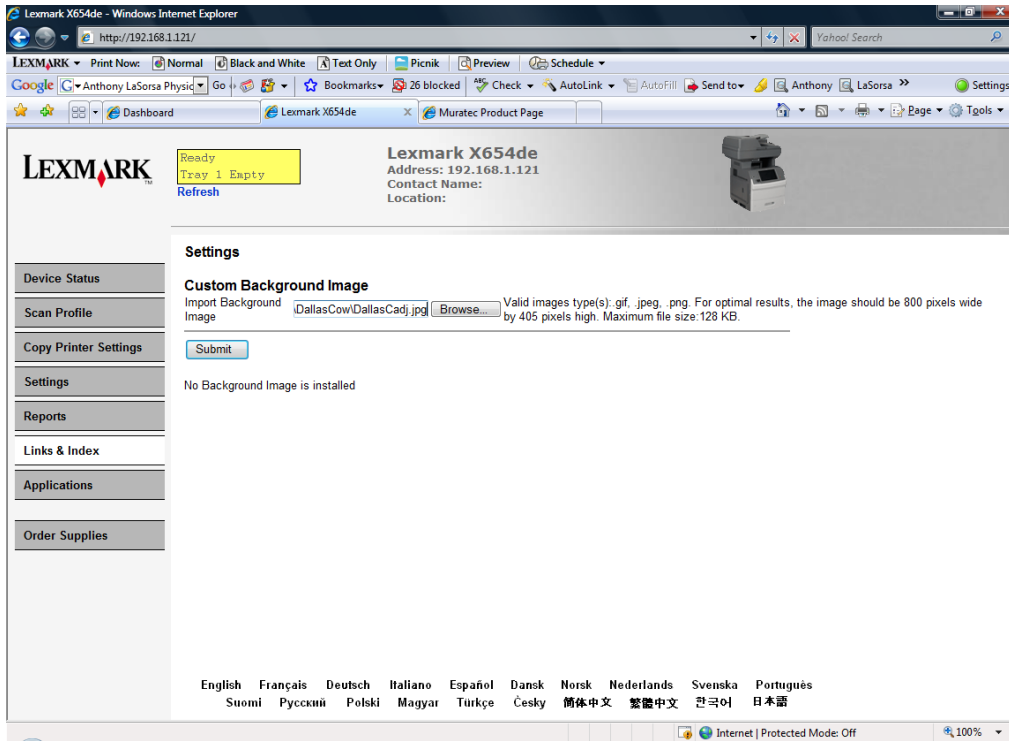
- 802.1x Authentication
- Address Book Setup
- Address, TCP/IP
- Alarms
- Analog Fax Setup
- AppleTalk
- Assigned File Servers, NetWare
- Banner Page, NetWare
- Bookmark Setup
- Certificate Management
- Confidential Print Setup
- Copy Settings
- [Custom Background Image](#)
- Custom Link Setup
- Custom Names
- Custom Types
- Device Credentials
- Device Information
- Device Settings
- Device Statistics
- Display Language
- Flash Drive Menu
- Flash Drive Print Settings
- Flash Drive Scan Settings
- Font Name
- Font Source
- Frame Types
- Gateway, TCP/IP
- General Settings
- Guided Security Setup
- HTML Menu
- Holding Faxes
- Hostname
- IP Address
- IPsec
- IPv6
- Image Menu
- Import/Export
- Internal Account Management
- Keyboard
- LPD Configuration
- LexLink
- Paper Size
- Paper Texture
- Paper Type
- Paper Weight
- PostScript Menu
- Power Saver
- Print Recovery
- Print Server Setup Page
- Print Settings
- Profiles
- Pull Printing
- Quality Menu
- Reset Print Server
- Resource Save
- SMTP Setup
- SNMP
- Scaling
- Schedule Power Saver
- Security
- Select Active Network Card
- Set Date and Time

English Français Deutsch Italiano Español Dansk Norsk Nederlands Svenska Português  
Suomi Русский Polski Magyar Türkçe Český 简体中文 繁體中文 한국어 日本語

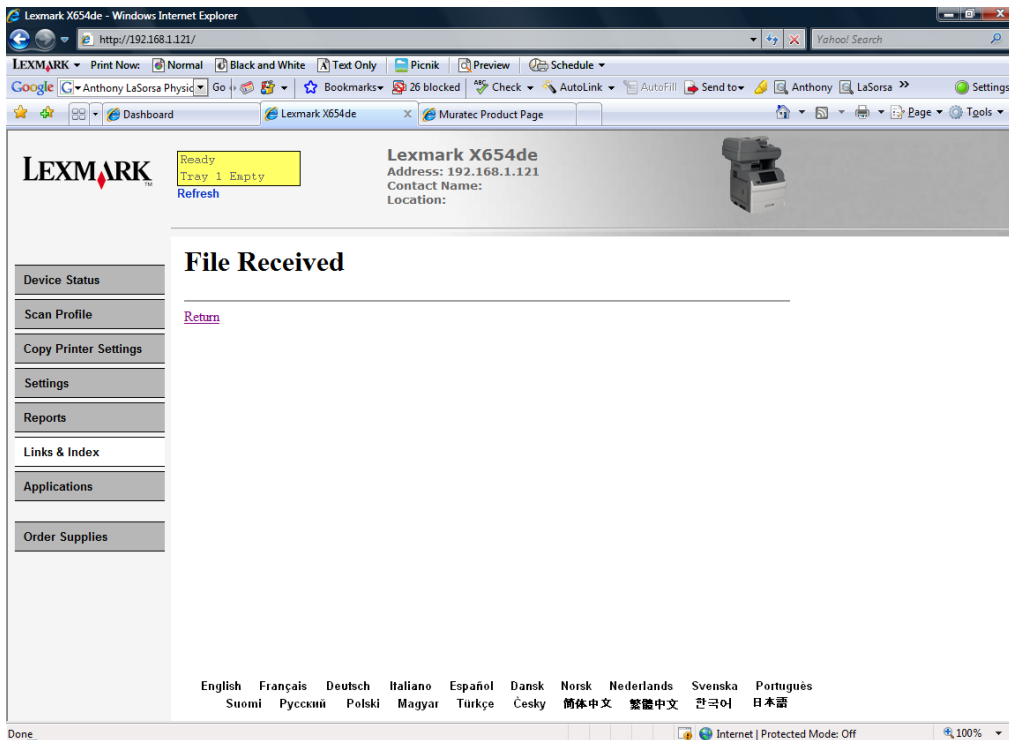
http://192.168.1.121/cgi-bin/dynamic/printer/config/gen\_custombackground.html

Internet | Protected Mode: Off 100%

Browse to the image file to upload and click “Submit”



Click “Return”



Done!

Lexmark X654de - Windows Internet Explorer

http://192.168.1.121/

LEXMARK Print Now: Normal Black and White Text Only Picnik Preview Schedule

Google Anthony LaSorsa Physic Go Bookmarks 26 blocked Check AutoLink AutoFill Send to Anthony LaSorsa Settings

Dashboard Lexmark X654de Muratec Product Page

**LEXMARK** Ready Tray 1 Empty Refresh

**Lexmark X654de**  
Address: 192.168.1.121  
Contact Name:  
Location:

**Settings**

**Custom Background Image**  
Import Background Image   Valid images type(s): .gif, .jpeg, .png. For optimal results, the image should be 800 pixels wide by 405 pixels high. Maximum file size: 128 KB.

English Français Deutsch Italiano Español Dansk Norsk Nederlands Svenska Português  
Suomi Русский Polski Magyar Türkçe Český 简体中文 繁體中文 한국어 日本語

Internet | Protected Mode: Off 100%